

## Large print and other languages

This information can be made available in alternative formats, such as easy read or large print, and may be available in alternative languages, upon request. For more information, speak to your clinical team.

এই তথ্যগুলো সহজে পড়া যায় অথবা বৃহৎ প্রিন্টের মত বিকল্প ফরম্যাটে পাওয়া যাবে, এবং অনুরোধে অন্য ভাষায়ও পাওয়া যেতে পারে। আরো তথ্যের জন্য আপনার ক্লিনিক্যাল টিমের সাথে কথা বলুন।

Na żądanie te informacje mogą zostać udostępnione w innych formatach, takich jak zapis większą czcionką lub łatwą do czytania, a także w innych językach. Aby uzyskać więcej informacji, porozmawiaj ze swoim zespołem specjalistów.

Macluumaadkaan waxaa loo heli karaa qaab kale, sida ugu akhrinta ugu fudud, ama far waa weyn, waxana laga yabaa in lagu heli luuqaado Kale, haddii la codsado. Wixii macluumaad dheeraad ah, kala hadal kooxda xarunta caafimaadka.

Bu bilgi, kolay okunurluk veya büyük baskılar gibi alternatif biçimlerde sunulabilir, ve talep üzerine Alternatif Dillerde sunulabilir. Daha fazla bilgi için klinik ekibinizle irtibata geçin.

میں پر پڑھنے کے لیے چاہتا ہوں، سہ آسانی سے دیکھ سکتا ہوں اور اسے آسانی سے سمجھ سکتا ہوں۔ مزید معلومات کے لیے، اپنی کلینکل ٹیم سے بات کریں۔

## Tell us what you think

Tweet us [@NHSBartsHealth](https://twitter.com/NHSBartsHealth)

Talk to us via [facebook.com/bartshealth](https://facebook.com/bartshealth)

Leave feedback on NHS Choices [www.nhs.uk](https://www.nhs.uk)

## Patient Advice and Liaison Service

If you need general information or advice about Trust services, please contact the Patient Advice and Liaison Service (PALS) on [www.bartshealth.nhs.uk/pals](https://www.bartshealth.nhs.uk/pals). Alternatively please contact staff who are providing your care if you require clinical advice.

Reference: BH/PIN/892

©Barts Health NHS Trust

Switchboard: 020 3416 5000

[www.bartshealth.nhs.uk](https://www.bartshealth.nhs.uk)

**NHS**

**Barts Health**  
NHS Trust

Patient information

## Vascular laboratory at The Royal London Hospital

You have been given an appointment in the vascular laboratory at Royal London Hospital for a vascular ultrasound test. This leaflet explains what the test involves.



## Why do I need a vascular laboratory test?

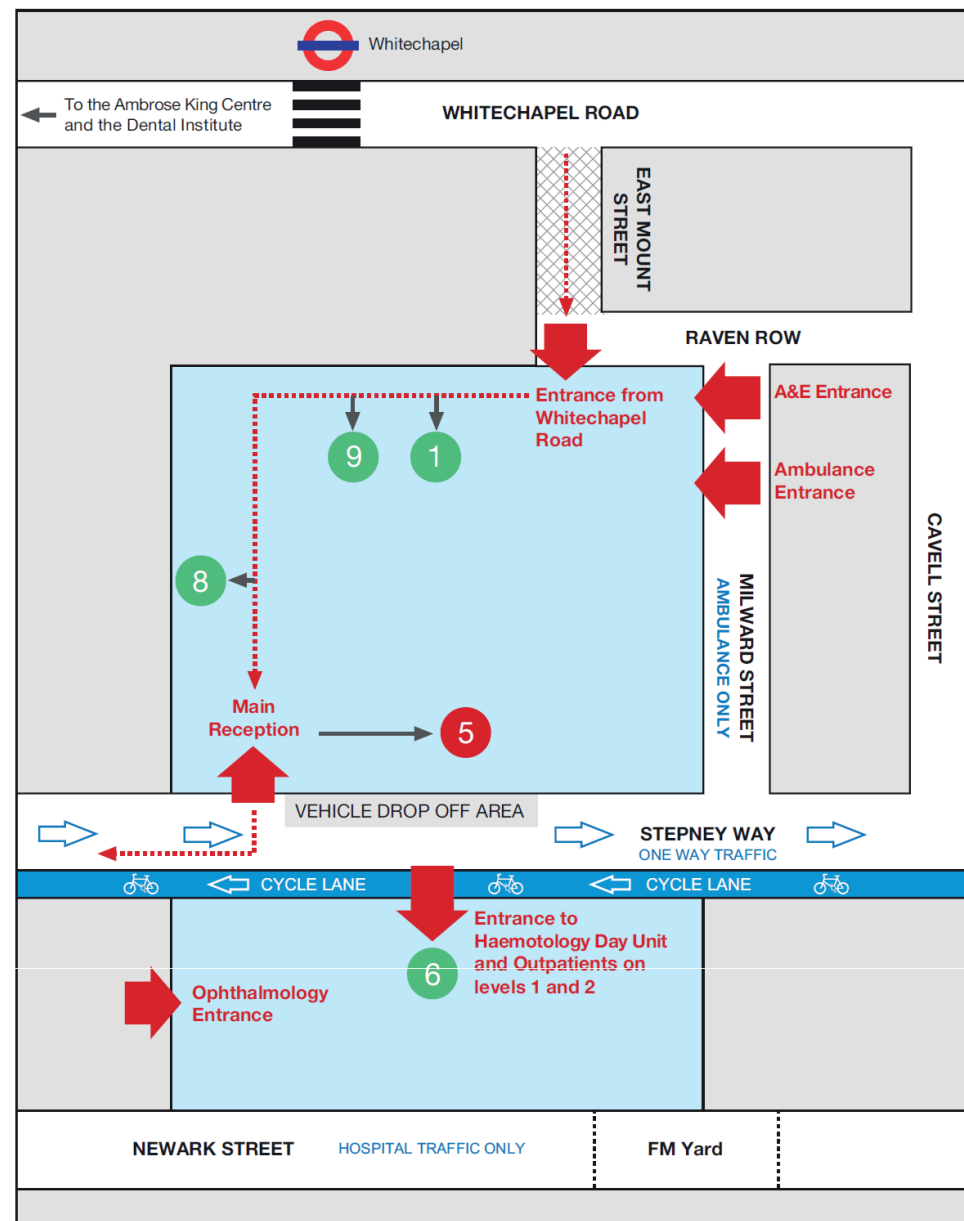
The test has been requested by a hospital doctor to help diagnose your condition and plan your treatment. Staff will explain the procedure to you and try to answer any questions that you may have.




## What type of tests will I have?

The test is usually an ultrasound scan in which special attention is paid to the blood vessels. The scan is sometimes called a 'duplex ultrasound' or 'doppler ultrasound scan'. The vessels most commonly examined are the arteries or veins in the neck, arms, legs or abdomen.

Another test uses ultrasound and blood pressure cuffs to measure blood pressure in the arms and legs. You may also be asked to exercise on a treadmill for up to five minutes at a speed you are happy with.

## Ultrasound machine



- 1 Lift core 1 - Lifts to the Renal Institute on floor 9
  - 9 Lift core 9 - Lifts to the Women's Centre and Children's Hospital on floors 6 to 8
  - 8 Lift core 8 - Lifts to outpatients on floors 1 and 2 and day and short stay surgery on floor 3
  - 5 Lift core 5 - Main visitor lifts to wards and the restaurant
  - 6 Lift core 6 - Lifts to outpatients on floors 1 and 2
-  Pedestrian Access Only    
  Traffic Direction
-  Pedestrian access to existing Outpatients Department

## Your health records

To enable us to improve the quality of the care that we provide, your health records are kept by the Trust and may be used for teaching, training, audit and research. Further information on how the Trust uses your information can be found on our website at

<http://www.bartshealth.nhs.uk/your-visit/advice-and-support/your-health-record/>

## Self help and support groups

[www.circulationfoundation.org.uk](http://www.circulationfoundation.org.uk)

[www.nhs.uk/smokefree](http://www.nhs.uk/smokefree)

[www.stroke.org.uk](http://www.stroke.org.uk)

[www.nhs.uk/pages/home](http://www.nhs.uk/pages/home)

## What will happen during the test?

During the ultrasound scan you will either lie or sit on a couch, or stand on a stool. The room will be partially darkened to enable the person performing the scan to see the monitor. You will be asked to partially undress to allow the area of interest to be scanned.

A clear, water-soluble gel is put on the skin and an ultrasound probe is slid over the skin of the area to be examined. The instrument causes no pain. The examination normally takes between 20 and 60 minutes and you may be asked to change positions during the scan.

## Do I need to prepare for the test?

There is no preparation for these tests. You can eat and drink as normal.

## Are there any risks involved?

There are no known risks accompanying the ultrasound examinations performed within the vascular laboratory.

## Who will perform the test?

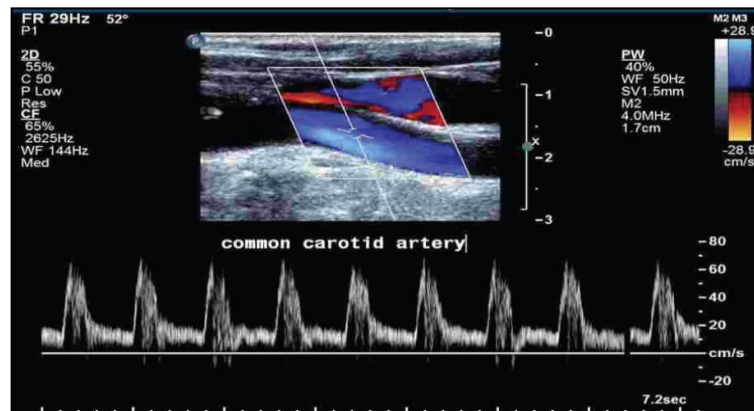
A clinical vascular scientist trained in the use of medical ultrasound will perform your test, though other staff may be present and the test may be checked by another member of staff. There are no medical doctors working in the lab. The hospital doctor who made the request will explain the results and clinical implications of your test to you when you next see them.

You do not have to be accompanied to your appointment, however, you may have somebody with you if you wish.

## What happens to the results of the test?

The test result will be stored in your hospital records. If your test was requested by a doctor within the Trust, they will be able to access your results electronically. If a doctor from another hospital requested your test, we will post or fax the results to them.

## Ultrasound image



## How to contact us

If you cannot attend or need more information before or after the test, please contact the vascular laboratory on 020 3594 1076 as soon as possible to arrange another appointment.

### Our administration address is:

Vascular Lab  
1st Floor (Imaging)  
Royal London Hospital  
London E1 1BB

Tel: 020 3594 1076  
Fax: 020 3594 3224

## Where is the vascular laboratory at The Royal London Hospital?

The vascular lab is located on the first floor of the new hospital. Once you have entered the building follow the signs to lift core 8 and take a lift to the first floor.

You will see signs for Outpatient Imaging (X-ray). The reception is immediately outside the lift area on the first floor.

## Getting to The Royal London Hospital:

**Tube:** Whitechapel underground station is opposite the hospital's main entrance via East Mount Street. The following tube lines run to Whitechapel tube station: the Hammersmith and City line, District line and the London Overground (East London line).

**Buses:** Buses that stop outside or close to the hospital on Whitechapel Road:

25, 106, 205, 253, 254

Buses that stop close to the hospital on Commercial Road:

15, 115, D3

Night buses: N25, N106, N253

Low-floor wheelchair accessible buses run on all routes serving The Royal London Hospital.

Drop off point for taxis and cars:

Please use the vehicle drop off area on Stepney Way

**Parking:** There is no public parking at the hospital but there is limited metered parking in surrounding streets.

Follow the signs to Lift Core 8 and take the lift to the first floor.