

Fixing Fred's tooth

A story for young children about using magic air (inhalation sedation) to fix a tooth



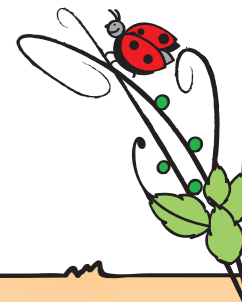
Paediatric Dental Department



This is Fred.
He is small and blue.
He likes his little red car.

Fred went to the dentist
to have a hole in one
of his teeth filled.

He's going to tell
you about it.

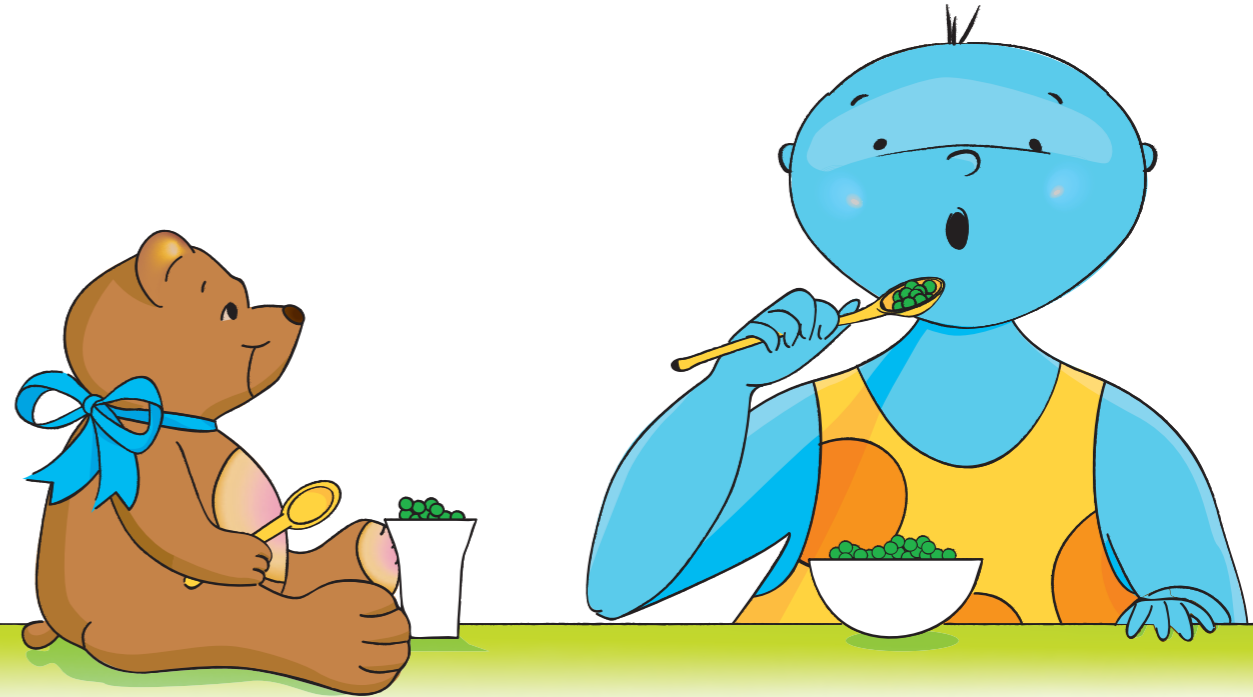


Hello, I'm Fred!

The dentist filled a hole in one of my teeth last week. I was a bit scared but the magic air the dentist gave me made it easy.

I had to make sure that I had a light meal to eat before coming in.

I brought along my favourite toy - a teddy called Fattum because that is what he has.

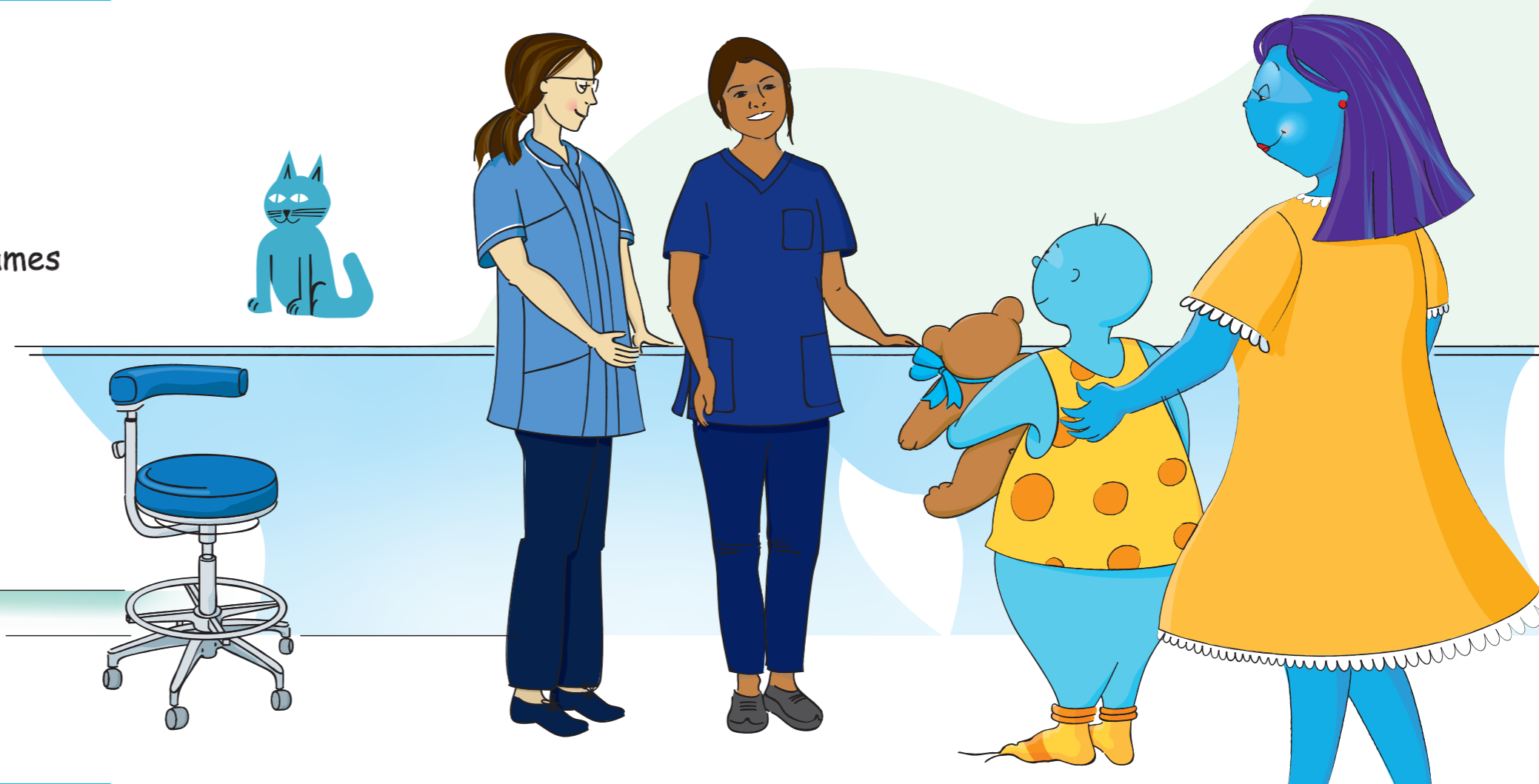


I came in with my Mum.

We were introduced to the dentist and the nurse. They told us their names and what they were going to do.

The dentist said she would give me some magic air so I didn't feel anything.

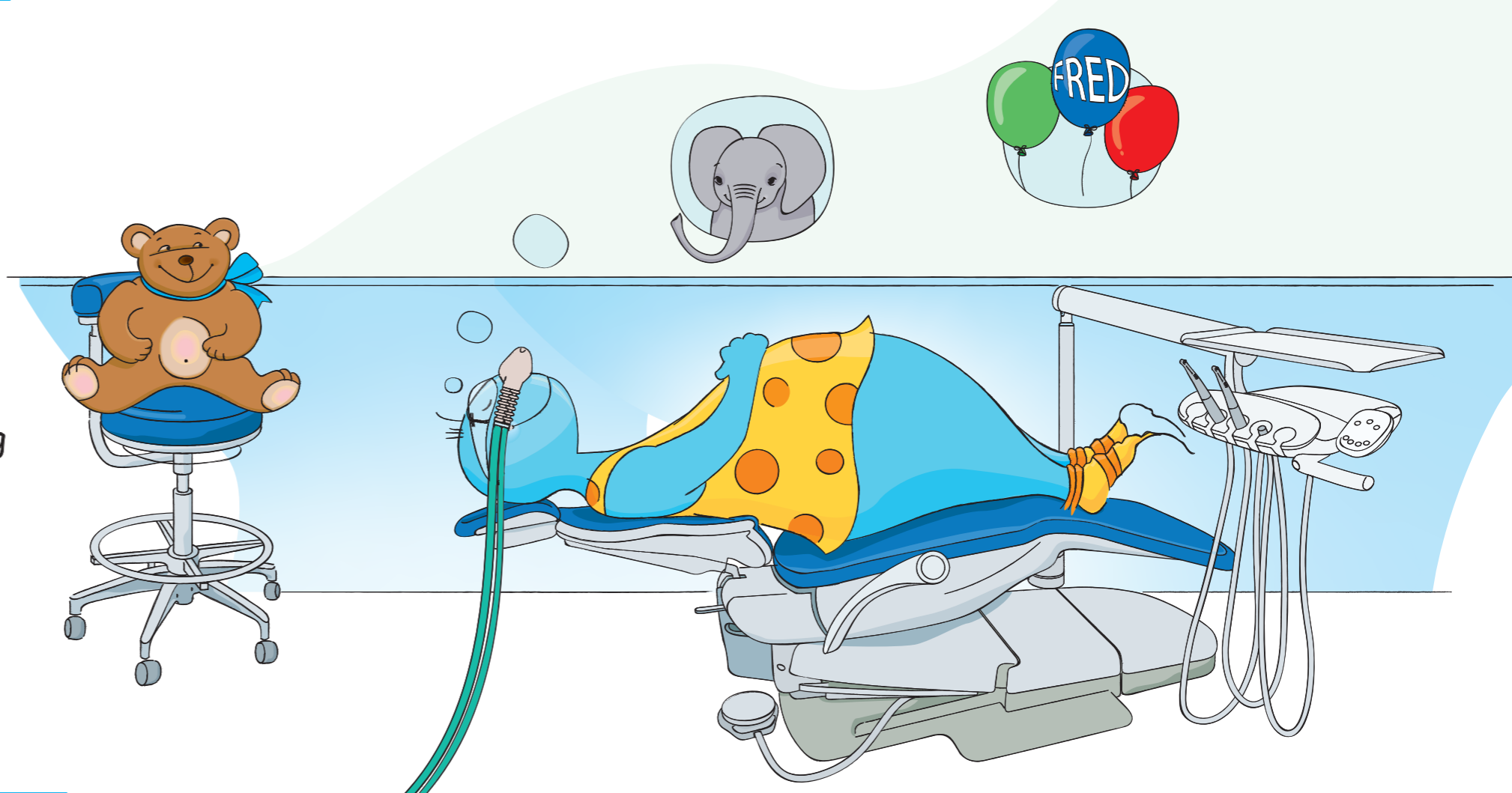
The nurse said she was going to help and make sure I was comfortable.



The chair I was sitting in was moved slowly flat by the dentist. Then I had to breath in the magic air through a mask which looked a bit like an elephant's trunk.

The air didn't smell of anything. It made me feel warm, with tingly fingers and toes, and like I was floating which was rather nice.

The dentist cleaned my tooth with an electric toothbrush that squirted water and made a buzzing sound before she filled the hole.



The dentist took the mask away a few minutes after she had finished.

After a few checks to make sure I was alright we went home where I rested.

Having my tooth fixed with the magic air was much easier than I had expected. And I was able to choose a really cool sticker!



Paediatric Dental Department

020 3594 6121

Open 8.30am–5pm
Monday to Friday

Children's Dental Emergency Clinic (emergencies only)

First floor Dental Hospital
020 3594 6121

Open 8.30am–5pm
Monday to Friday

Out of these hours, please
ring the RLH Paediatric
Emergency Department
020 3594 0005

Patient Advice and Liaison Service (PALS)

Please contact us if you need general
information or advice about Trust services.
www.bartshealth.nhs.uk/pals

Large print and other languages

For this leaflet in large print or other languages,
please speak to your clinical team.

Tell us what you think



Tweet us @NHSBartsHealth



Talk to us via www.facebook.com/bartshealth
Leave feedback on NHS Choices www.nhs.uk

©Barts Health NHS Trust
Switchboard: 020 3416 5000
www.bartshealth.nhs.uk

Publication date: May 2020
Reference: BH/PIN/???
All our patient information leaflets
are reviewed every three years