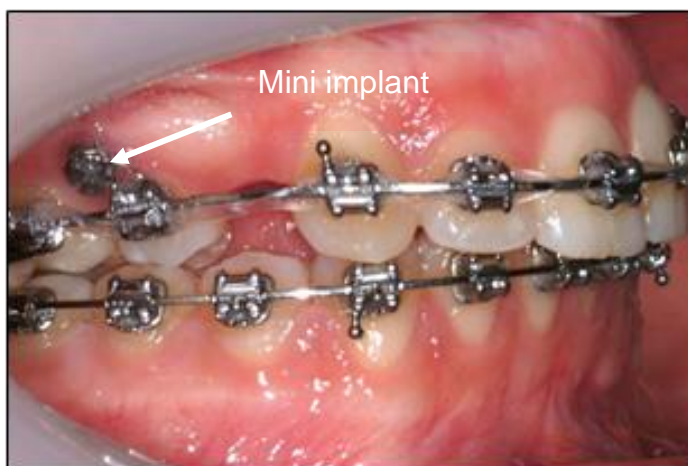


Orthodontic Mini Implants

What are mini implants?

- Small metal screws carefully inserted through the gum into the jaw bone to act as anchors - to help moving teeth into desired position.
- Used by orthodontists as part of brace treatment.

Your orthodontist will discuss with you whether they may be needed.



What are the risks of having mini implants?

- Tooth sensitivity. This should normally settle within a few days.
- Loosening of the mini implant. Removal or replacement may be needed.
- Breakages of the mini implant during insertion or removal. The broken parts may be removed surgically or left in the bone.

What does their removal involve?

- Removal usually takes less than five minutes.
- Local anaesthetic is not usually needed for this (as it is painless).

How big are mini implants?

- Between 5-10mm long.
- Approximately 1-2 mm in diameter.
- Shorter than your little fingernail.

What is involved in placing the mini implants?

- Small amount of local anaesthetic (to numb the area of your jaw and gum).
- Radiographs may need to be taken before or after the procedure - to check that the mini implant is in the correct position.

How will I feel when the mini implants are inserted?

- You may feel a minor degree of pain for a day or two.
- The mini implant may rub against your cheek (wax will help with this).

What are the risks of having mini implants?

- Tooth sensitivity. This should normally settle within a few days.
- Loosening of the mini implant. Removal or replacement may be needed.
- Breakages of the mini implant during insertion or removal. The broken parts may be removed surgically or left in the bone.

What does their removal involve?

- Removal usually takes less than five minutes.
- Local anaesthetic is not usually needed for this (as it is painless).



Before orthodontic treatment
with mini implant



During orthodontic treatment
with mini implant



After orthodontic treatment
with mini implant