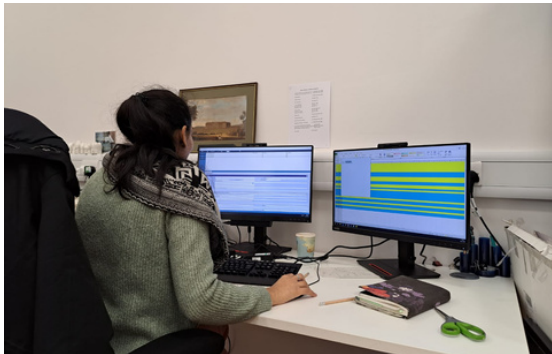


# Archives Newsletter

## Updates from Barts Health NHS Trust Archives

### COLLECTIONS FORTNIGHT

We have been busy this winter with cataloguing work, and several projects to ensure that all our catalogue and location data is correct and up-to-date. January saw our annual 'Collections Fortnight' closure period, when the archives are closed to research appointments and enquiries so that the team can focus on processing and cataloguing collections. Over 80 boxes of previously recorded property deeds and leases relating to the St Bartholomew's Hospital estate, spanning the 16th-20th century, were added to the online catalogue, along with five boxes of photos of photos. We also processed 60 uncatalogued accessions, and checked over 1,900 entries on our locations database - and since then we have continued this work, reviewing over 4,000 accessions records and undertaking over 170 physical box checks to complete these projects this quarter.



### TEAM SKILLS SHARING AND PLANNING DAYS

We have taken the opportunity this quarter to run team days focusing on different aspects of the service's work, to plan forthcoming projects, and share skills.

In January, Medha ran a 'Digital Day', looking at our processes for taking in 'born digital' records (records created and stored only in digital format, rather than digitised from paper) and for digital archiving, using the digital preservation tool Arkivum, which we recently acquired. As the work of the Trust and the other organisations whose records we hold becomes increasingly paperless, ensuring that the long-term preservation and access to digital records is as central to



our work as the preservation of the parchment and paper records we hold.

In March, our 'Collections Day' was a chance to focus on our collections care practice and planning, from a review of the pest management and environmental monitoring processes in our stores, to a masterclass by Ginny in how to make bespoke 'phase boxes' for archive volumes.



## BRINGING THE COLLECTIONS CLOSER PROJECT



We held the first Community Curation workshops in February for our project, 'Bringing the Collections Closer at the Royal London Hospital'.

Our Community Curators, recruited from the local east London community and from patients and staff of the Royal London, will each attend a workshop in the archives to help us select material from the historic collections of the hospital, to feature in new digital heritage displays which will be installed in patient waiting areas at the hospital later this year.



With support for the project from Barts Charity, the new displays will allow patients and visitors to engage with the collections and stories of the hospital and aim to improve the waiting experience.



The Community Curators who joined us for the first project workshops were almost all first time visitors to the Trust Archives, and the feedback on the sessions was really positive.

We're really looking forward to the next sessions coming up throughout April and May, and to working with Anna Ravenscroft, our engagement and interpretation consultant, to develop the workshop outputs into content for the new digital display units.

There are still a few workshop places available - to find out more or to sign up as a Community Curator, please email us!



## NEW DISPLAYS AT QMUL

Medha, the Archivist for the School of Medicine and Dentistry, coordinated the reinstallation of artworks in the Garrod Building at Whitechapel following a major refurbishment of the building, when the paintings and sculptures had been in temporary storage. Trophies from the historic collections were selected for display in the new Student Union space in the building, and it is anticipated that a new case will be installed later this year for the display of more material from the historic collections of the medical school and hospitals in the Garrod Building.



The library on the QMUL Mile End campus has also recently reopened following refurbishment works, and our colleagues in the QMUL Archives curated a display on the history of the university's libraries, including material loaned from our collections.

## CAN YOU HELP?



We're trying to find out more about these items - can you help? They were transferred to the collections nearly 35 years ago by a radiotherapist at the London Hospital (now the Royal London). According to the information we have, they were used in radiotherapy for breast cancer c1940s-1960s, and the design is unique to the hospital. There are two wooden pentagons, one with sides of 17cm in length and one with 19cm sides. The best suggestion so far is that they were used in dose distribution analysis, to measure the variation in the amount of radiation across a reproducible area. Do you know? Drop us a line!

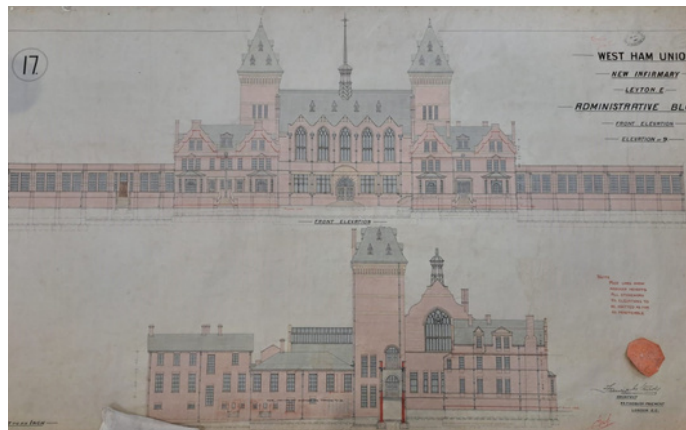




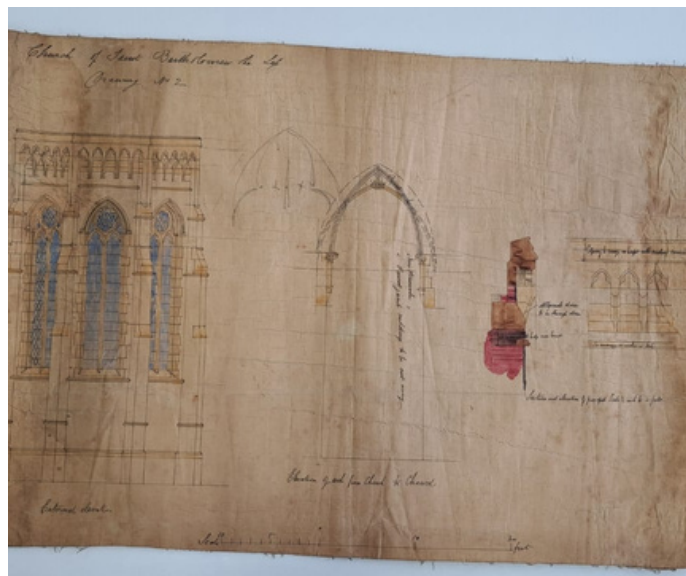
## NEW ACCESSIONS

As well as transfers of administrative records from within the Trust, we have also received several fantastic donations to the archives so far this year. Two new acquisitions (or 'accessions' in archive terminology) have come from former hospital staff who saved historic records from disposal in the past, and we are delighted to add them to the collections and to be able to preserve them for the future.

Our 'Whipps Cross Voices' project, which ran during 2022, really increased awareness of the archives in the area surrounding Whipps Cross Hospital, and continues to benefit the collections with new accessions like a wonderful early elevation plan of the hospital and the beautiful watercolour originals of Christmas cards sent by the hospital's social club in the 1970s.



We don't know how three early 19th century drawings of St Bartholomew's the Less church ended up in the basement of the hospital's old blood transfusion department in the 1980s, destined for disposal, but we are very grateful to the donor who rescued them and recently gave them to the archives to be added to the parish records of the hospital church, along with two other plans of hospital buildings!



## Other ways to follow our service

To learn more about our collections visit our [website](#) where you can search the Barts Health NHS Trust Archives online [catalogue](#), and find out how to book a visit to the search room at St Bartholomew's Hospital.

Follow Barts Health Archives on social media:

Twitter: @BHAandM

Instagram: @barts\_health\_archives\_museums

Bluesky: @bharchives.bsky.social

Email [barts.archives@nhs.net](mailto:barts.archives@nhs.net) to unsubscribe from this newsletter

